



Para-Glide WING POST

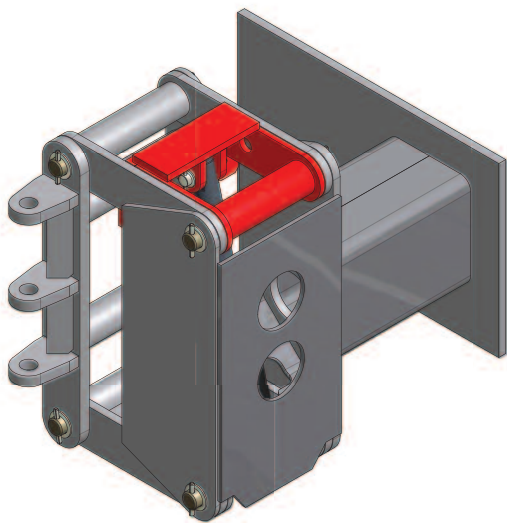
by Monroe Snow & Ice Control

The Monroe Para-Glide Double Function Patrol Wing is a multi-function wing that is capable of patrolling snow to widen shoulders or perform limited benching. The Para-Glide Double Function Wing is operated by hydraulic cylinders for positive activation of the wing. The operator has the ability to independently control the toe or heel of the wing. Another feature is the built in mechanical float to allow the wing to follow the contour of the plowing surface. The mounting of this wing usually requires no modification to the exhaust system, no additional cab to body spacing, no drivetrain interference and a rear mount that is located above the frame for an unobstructed ground to frame clearance. A Monroe Para-Glide Wing will increase your plow clearing capacity, increase operator efficiency, and reduce equipment road mile usage.

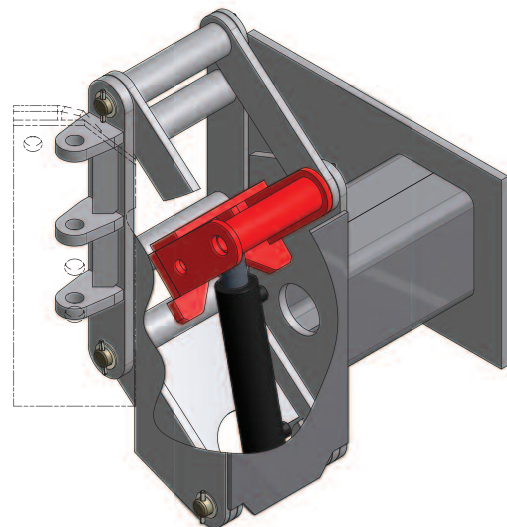
Two 4-way (double acting) valves are required • All moldboards are shotblasted and powder coated Urethane Orange

Features

- NEW and Improved Free Flotation Reduces Road Shock and Vibration to the Vehicle
- Longer Service Life and Fewer Repairs with Increased Safety.
- Faster Cycle Times
- Trailing Link Design
- 14" Full Float with 18" of Lift
- All Hydraulically Operated- No Cables
- Heavy Duty Construction with High Tensile Steels being Used to Reduce Weight of Assembly and Increase Durability
- 100% Welded Moldboard
- One Piece 1/2" Moldboard Reinforcement Ribs
- Rear Push Frame Mounted Above Frame for Increased Ground to Frame Clearance
- Single Adjustable Spring Cushioned Push Arm with Safety Shear Pin on 8' and 9' Wings. Double Push Arms on 10', 11' and 12' Wings
- No Additional Cab to Body Spacing Required for Rear Push Arm Frame



Para-Glide Wing Post in Resting Position.



Para-Glide Wing Post in Full Float Position.

Specifications

Specifications subject to change without notice.

	DFPW-8	DFPW-9	DFPW-10	DFPW-11	DFPW-12
Overall Moldboard Length	104"	116"	128"	140"	152"
Cutting Edge Length	8'	9'	10'	11'	12'
Height of Moldboard at Nose	29"	29"	29"	29"	29"
Height of Moldboard at Heel	39"	39"	39"	39"	39"
Moldboard Thickness	3/16"	3/16"	3/16"	3/16"	3/16"
Single Pusharm - Adjustable 4 Positions	OPT	OPT	OPT	OPT	OPT
Double Pusharms	OPT	OPT	OPT	OPT	OPT
Slide Cylinder	3x10	3x10	3x10	3x10	3x10
Lift Cylinder	4"ID x 21.75"	4"ID x 21.75"	3"ID x 15"	3"ID x 15"	3"ID x 15"
Weight of Complete Wing Assembly	1620	1690	1870	1985	2050
Weight of Moldboard	700	770	840	720	785
Clearing Width With 90° Push Arm Angle	58"	65"	72"	79"	87"



Shown with optional square pusharm.



Options

Two Piece Torsion Trip Edge
 Carbide Cutting Edge
 Curb Guard
 Full Trip Moldboard
 Dual Pusharms
 Moldboard Wear Shoe(s)

Decell Cylinder
 Left Side or Dual Mount
 Special Paint
 Power Slide Push Arm
 Mid or Rear Mount

Manufactured by:
Monroe Snow & Ice Control
 1051 W. 7th Street • Monroe, WI 53566
 800-880-0109 • 608-329-8105
 608-328-8390 Fax
 Web: www.monroetruck.com
 E-mail: snowandicecontrol@monroetruck.com

Distributed by: