



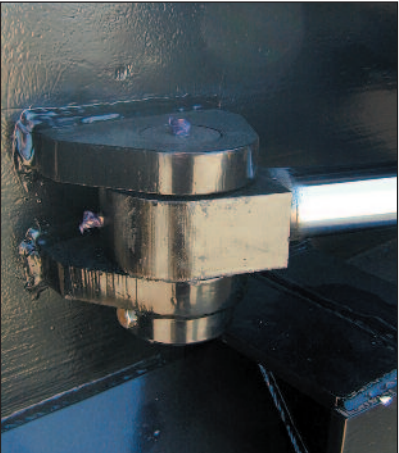
New and Improved!

Monroe Heavy Duty Loader/Grader Plow

Model LGP

Moldboard Thickness: ¼"
Moldboard Rib: Eight, ½" thick vertical ribs
Bottom Angle: ¾" x 4" x 6"
Boxed for additional reinforcement
Top Angle: ½" x 4" x 6"
Boxed for additional reinforcement
Pushframe: 18" x 42.7# channel
Reinforced with ½" plate
Reversing Cylinders: 4" x 21 ½" double acting with cushion valve
2" Fixed Cylinder Pins with HD Mounts

Swivel Plate: 1" thick with oscillation
Designed to accept various couplers
Trip Assemblies: H.D., enclosed trip spring assemblies
A-Frame Pivot Pin: 2" stress-proof pin
Paint: Powder coat yellow and black



The new and improved LGP plow shown with outboard cylinder setup, 2" cylinder pins and cylinder ears.



John Deere 872G Motorgrader with 12' LGP plow & 12' SnowHawk Wing with Rear Ripper Mount



John Deere 744H with 12' front wing and 16' LGP



Monroe typically uses "couple-under-pressure" wing-type fittings to speed implement attachment and detachment from the loader or motorgrader



A variety of female coupler hook options are available, such as these B-Type hooks, which mate up to Deere's optional front lift group.



Maximum Single-Pass Coverage--The standard 12' LGP plow produces a 10'2" clearing path when fully angled, which is ideal for clearing the front steering wheels & feeding the snow load onto the wing behind it.

Monroe Snow & Ice Control
1051 West 7th Street
Monroe, WI 53566
Toll Free: 800-880-0109
Fax: 608-328-8390
www.monroetruck.com

Specialists in Snow Removal Systems for Construction Machinery